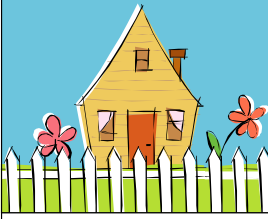


MISS SANDIE'S SCHOOL NEWSLETTER

August 2019



HAPPY AUGUST!

MORNING PROGRAM NEW TIME PERIOD IS 8:45 AM TO 12:30 PM

Starting August 26th, our MORNING PROGRAM is now **8:45 am to 12:30 pm**. You may drop off your child any time after 8:45 am. If you need drop off before 8:45 am then you need to sign up for the earlier hours.

TUITION RATES

Tuition rates will be raised starting with the September 1st, 2019 billing period. Please look for the 2019-2020 school year tuition rates on the sign-in counter.

\$75 MATERIALS FEE

As always, the \$75 materials fee is due September 1st along with tuition. This fee covers materials for the entire 2019-2020 school year. Please add this to your September tuition.

MISS SANDIE'S SCHOOL CALENDAR

The 2019-2020 Miss Sandie's School calendar is available for pick-up on the Sign-In/Out table. Please be sure to take a copy and mark your personal calendars with important activities and school holidays.

SCHOOL PEANUT FREE

Due to the high volume of students with severe peanut allergies, Miss Sandie's School is PEANUT FREE. Please look for signage on your child's classroom door for additional food allergies that may exist in your child's classroom.



BACK TO SCHOOL FAMILY PICNIC/BARBECUE: FRIDAY, SEPTEMBER 6TH

Please be sure to join us for the Back To School Family Picnic and Barbecue on Friday, September 6th! This is a great way to kick off the new year, meet your child's classmates and families, and enjoy the fall weather. We hope your whole family will join us! More information will be provided on the Sign-in/Out counter.

WE HAVE AN AMAZING TEAM OF TEACHERS!

Our staff of enthusiastic, caring and experienced teachers looks forward to a new year of discovery, learning and fun. We would like to express our appreciation for their continued dedication to all Miss Sandie's School children. This group of teachers love working with, teaching and caring for children; they have a strong passion for early childhood education that is critical to the success of this school.

USE LEGIBLE SIGNATURE ON SIGN-IN/OUT SHEET AT DROP-OFF & PICK-UP

Very Important: Signing in and out is required by the State of California.

- Sign-in/out on the sheets provided, USING YOUR FULL LEGAL & LEGIBLE SIGNATURE. Initials are NOT acceptable.
- After signing in, accompany your child to their classroom.
- Follow the same process when signing out, using your FULL LEGAL & LEGIBLE SIGNATURE.

UPCOMING EVENTS

Friday, August 23 rd	Staff In-service Day (school closed)
Monday, August 26 th	First Day of School
Monday, September 2 nd	Labor Day (school closed)
Friday, September 6 th	Family Picnic/BBQ (5:45-7:30pm - everyone welcome)
Tuesday, September 10 th	Back to School Night 6:00 - 7:00 pm (parents only)

IMPORTANT INFORMATION & REMINDERS

Label Your Child's Clothes. Please be sure to label (*permanent marker*) your child's clothing, including jackets, tops, bottoms and shoes. Our Lost & Found grows rapidly.

Items that are not claimed after 3 months are donated to Novato Human Needs Center or Goodwill.

Water Play - Clothes & Shoes. We offer water play during the fall. We recommend that you send your child to school wearing waterproof sandals with straps which dry faster than canvas shoes.

If you object to your child getting wet and running around during water play time wearing only a diaper or underwear, please let your child's teacher know. If you would prefer that your child wear a swimsuit during water play, please make sure you tell your child's teacher and leave one in his or her cubby.

Update Immunization Records & Emergency Contact Info. For all of our continuing families, licensing requires that Miss Sandie's have copies of ALL of your child's most recent immunizations.

Please drop off a copy of your child's most recent immunization record if your child has had shots in the past year. This is very important.

PLEASE GET IN THE HABIT OF MAKING A COPY OF YOUR CHILD'S IMMUNIZATION RECORD EVERY TIME YOUR CHILD RECEIVES IMMUNIZATIONS. Please drop the record off in the office --- thanks!!

Current Contact Information. Also, it is very important that we have all of the most current information for your child. This includes you/your significant other's work, home and cell numbers, home addresses and any allergies or special needs. Please stop by the office to update this information.

